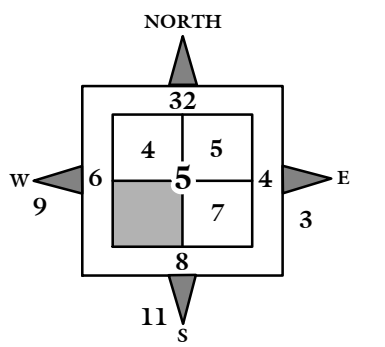


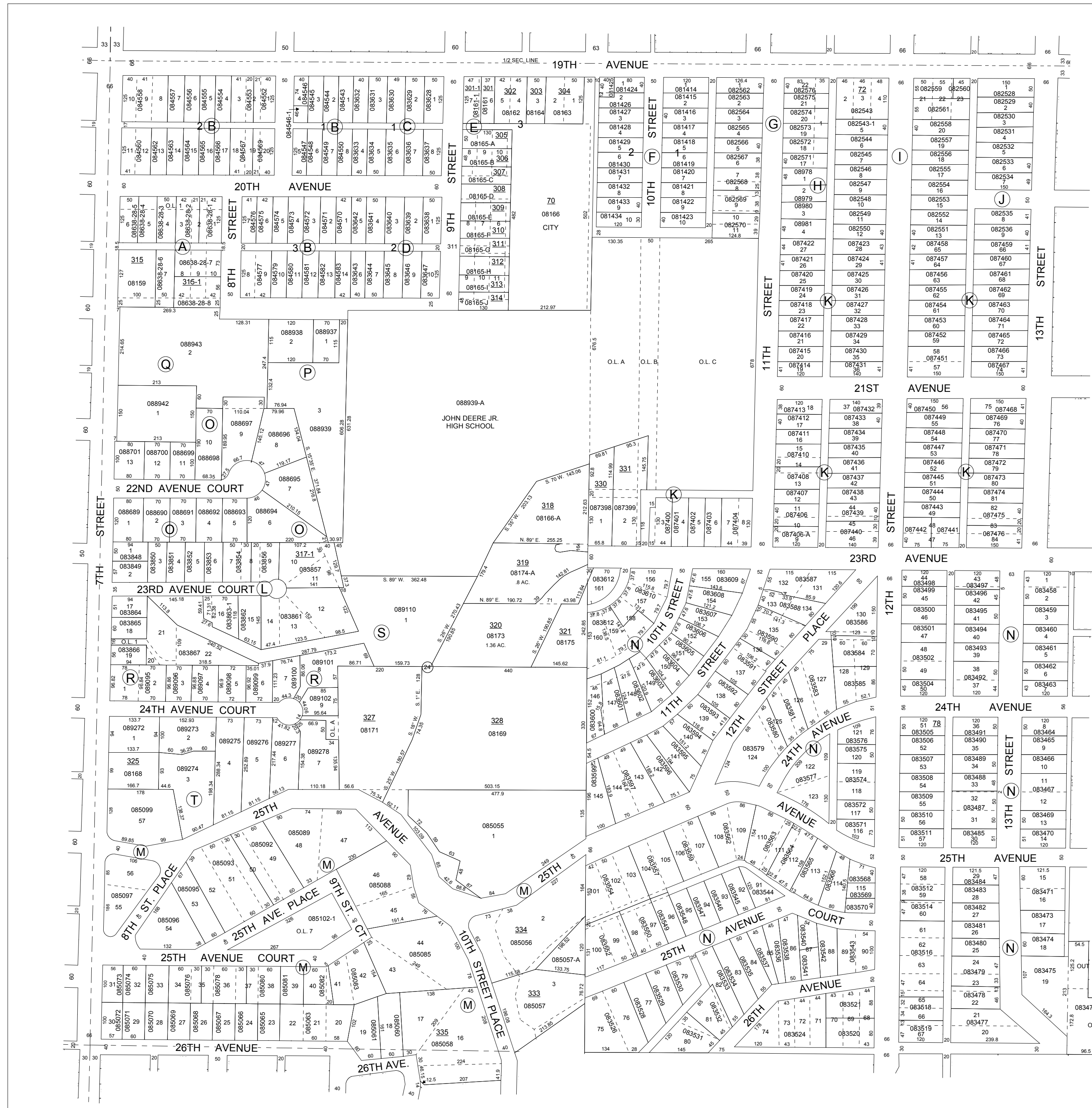
NOTE: STARTING IN 2002, PARCEL NUMBERS WILL NOT REFLECT THE TOWNSHIP ABBREVIATIONS, BUT THE 2-DIGIT TOWNSHIP NUMBER.



0 100 200 300
Feet

GIS DEPARTMENT
ROCK ISLAND COUNTY,
ILLINOIS

FOR SUBDIVISION
INFORMATION
SEE SHEET 6-S



SUPERVISORS' ASSESSMENT
MAP OF
S.W. 1/4 SECTION 5
T.17N., R.1W. OF 4TH P.M.
MOLINE TOWNSHIP
SUPPLEMENTAL FOR 2018
17-05-300-

THIS IS NOT A LEGAL DOCUMENT