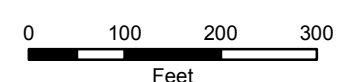
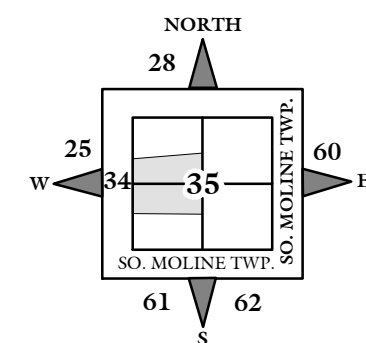
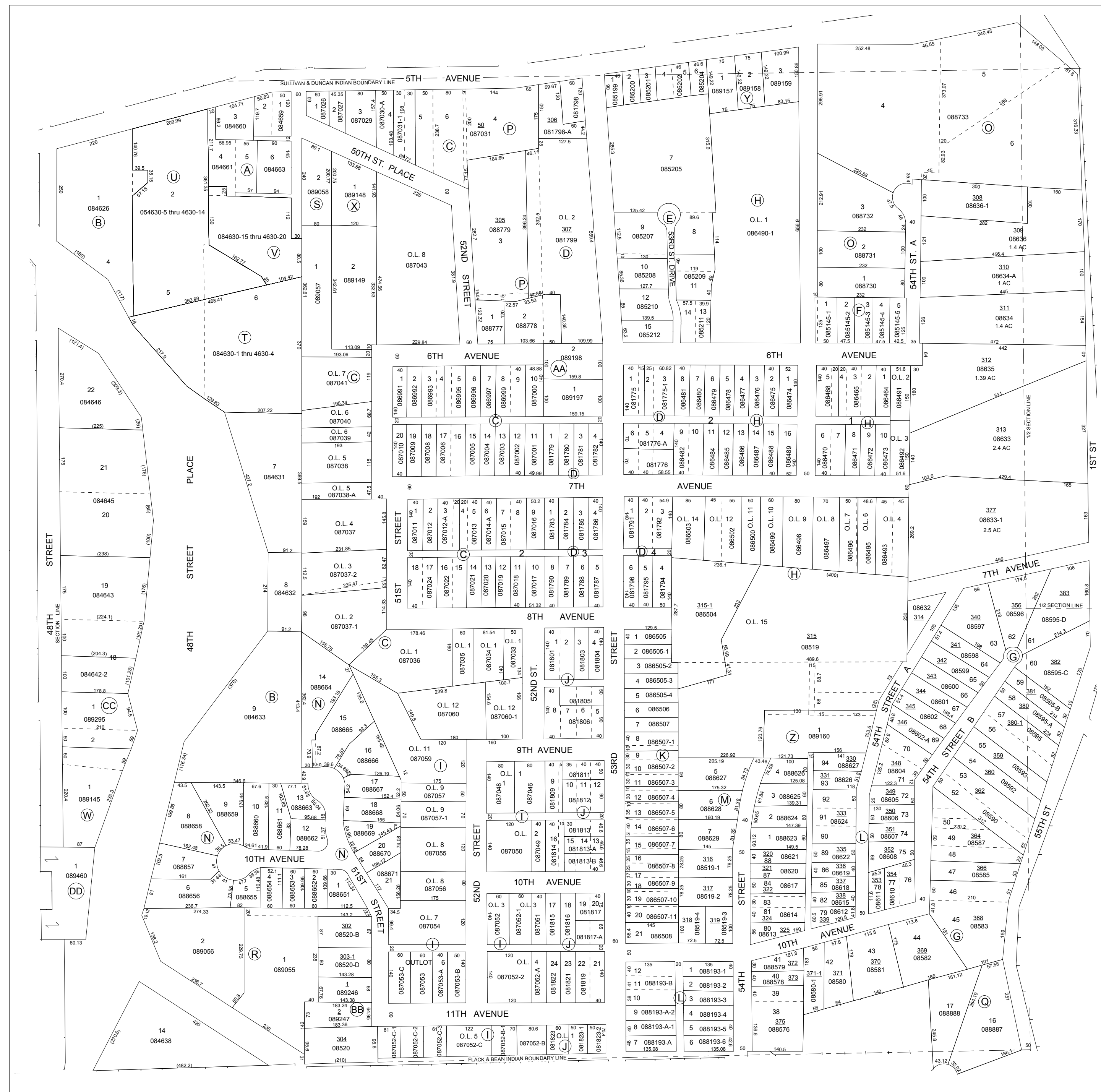


NOTE: STARTING IN 2002, PARCEL NUMBERS WILL NOT REFLECT THE TOWNSHIP ABBREVIATIONS, BUT THE 2-DIGIT TOWNSHIP NUMBER.



GIS DEPARTMENT
ROCK ISLAND COUNTY,
ILLINOIS

FOR SUBDIVISION
INFORMATION
SEE SHEET 27-S



SUPERVISORS' ASSESSMENT
MAP OF
PART OF NW 1/4 & N 1/2
SW 1/4 SECTION 35
T. 18 N., R. 1 W 4TH P.M.
MOLINE TOWNSHIP
SUPPLEMENTAL FOR 2017
08-35
THIS IS NOT A LEGAL DOCUMENT