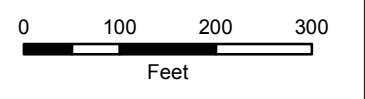
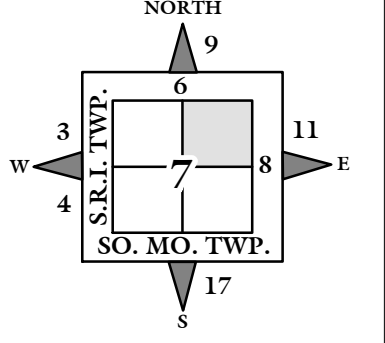
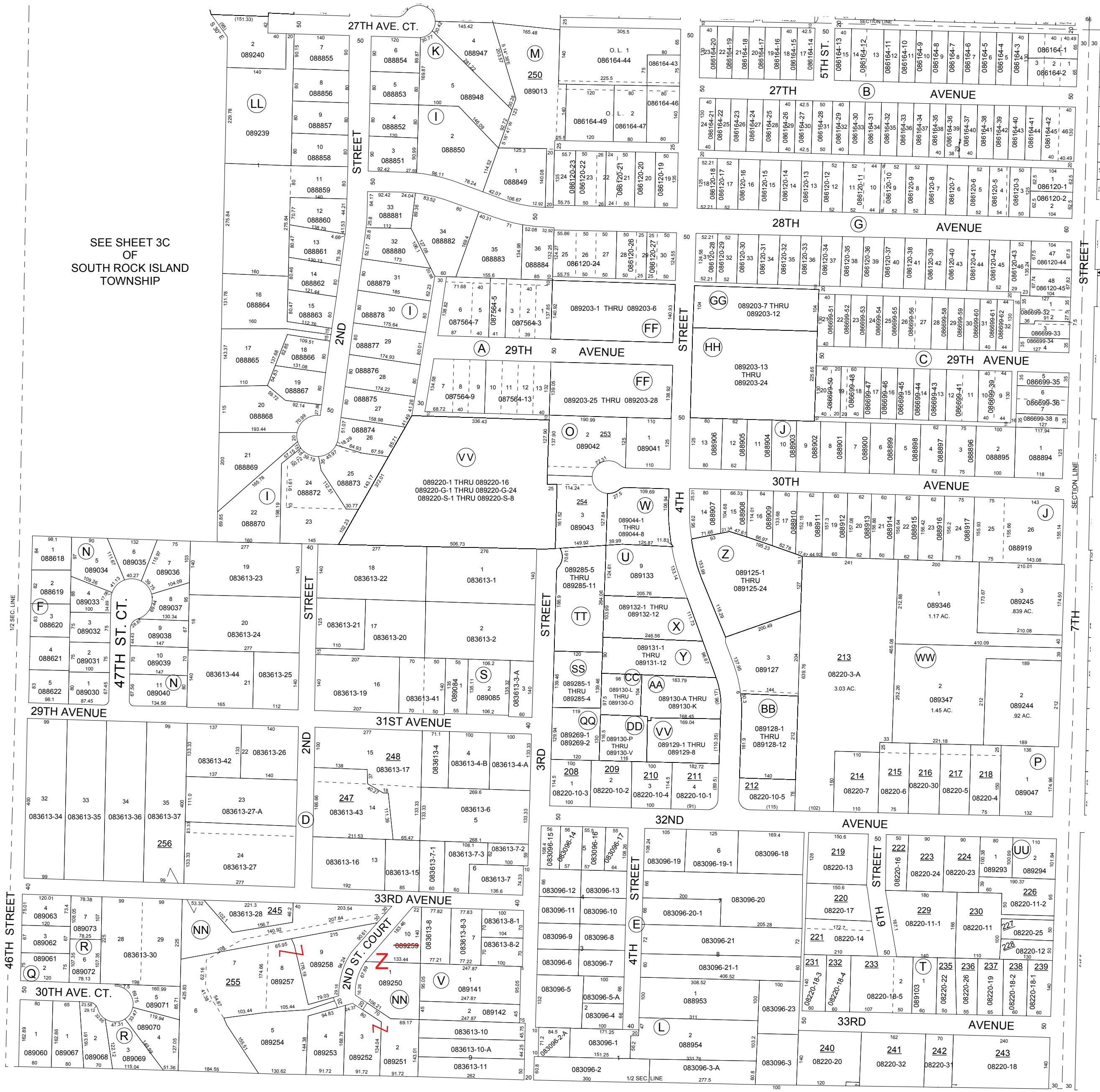


NOTE: STARTING IN 2002, PARCEL NUMBERS WILL NOT REFLECT THE TOWNSHIP ABBREVIATIONS, BUT THE 2-DIGIT TOWNSHIP NUMBER.



GIS DEPARTMENT  
ROCK ISLAND COUNTY,  
ILLINOIS

FOR SUBDIVISION  
INFORMATION  
SEE SHEET 10-S



SEE SHEET 3C  
OF  
SOUTH ROCK ISLAND  
TOWNSHIP

SUPERVISORS' ASSESSMENT  
MAP OF  
N.E. 1/4 SECTION 7  
T.17N., R.1W. OF 4TH P.M.  
MOLINE TOWNSHIP  
SUPPLEMENTAL FOR 2016

17-07-200

THIS IS NOT A LEGAL DOCUMENT