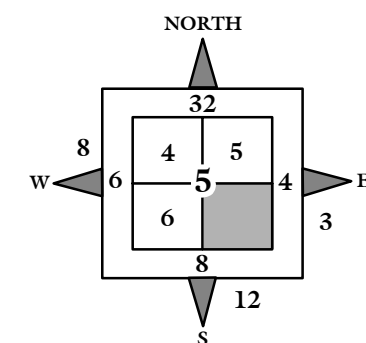


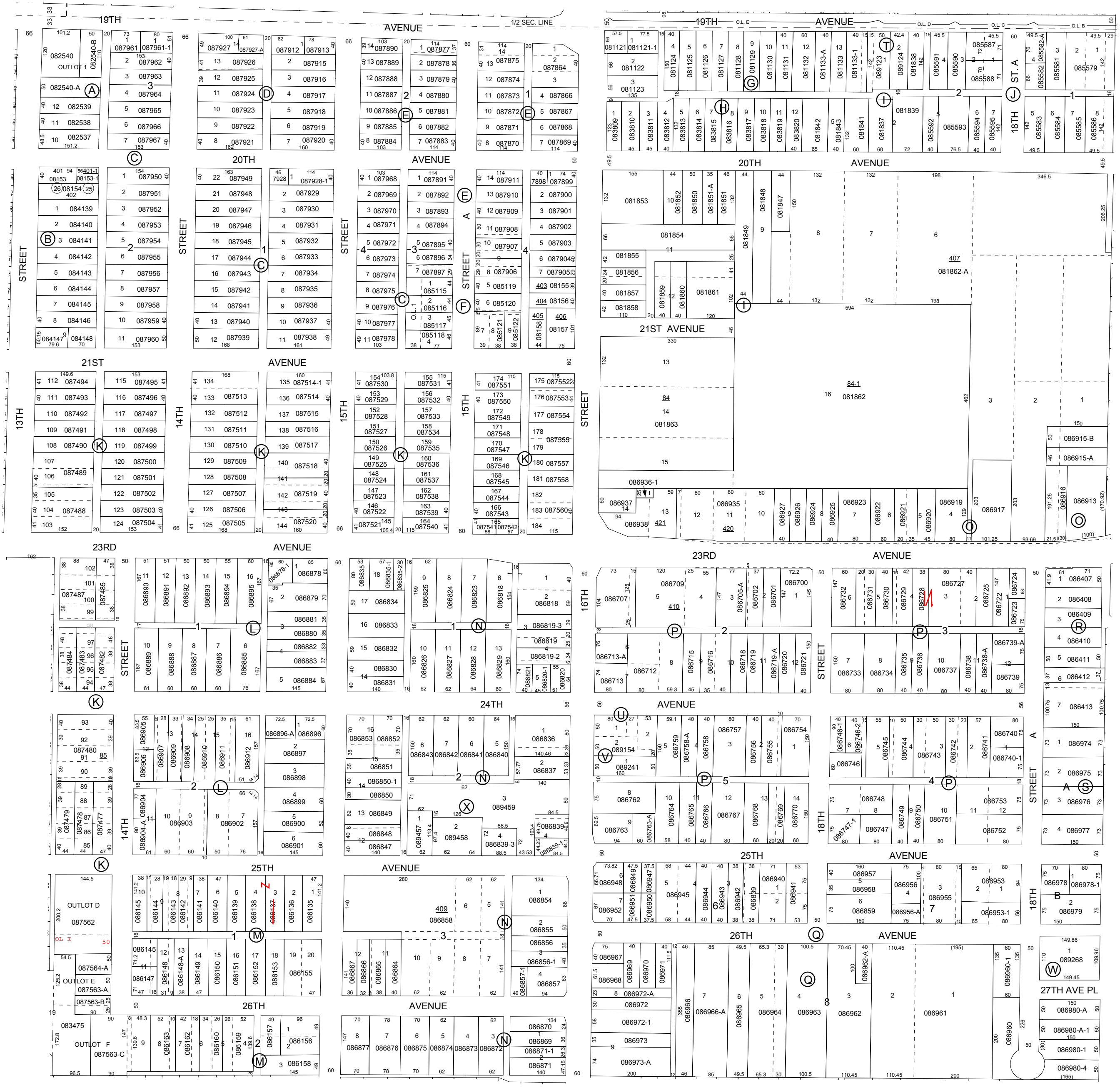
NOTE: STARTING IN 2002, PARCEL NUMBERS WILL NOT REFLECT THE TOWNSHIP ABBREVIATIONS, BUT THE 2-DIGIT TOWNSHIP NUMBER.



0 100 200 300  
Feet

GIS DEPARTMENT  
ROCK ISLAND COUNTY,  
ILLINOIS

FOR SUBDIVISION  
INFORMATION  
SEE SHEET 7-S



SUPERVISORS' ASSESSMENT  
MAP OF  
S.E. 1/4 SECTION 5  
T.17N., R.1W. OF 4TH P.M.  
MOLINE TOWNSHIP  
SUPPLEMENTAL FOR 2013

17-05-400  
THIS IS NOT A LEGAL DOCUMENT