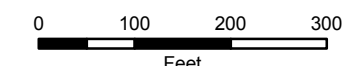
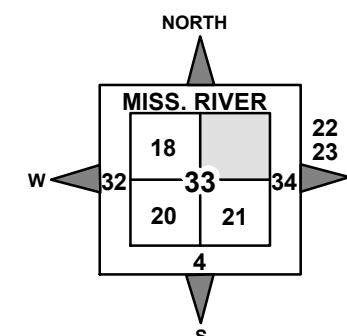


NOTE: STARTING IN 2002, PARCEL NUMBERS WILL NOT REFLECT THE TOWNSHIP ABBREVIATIONS, BUT THE 2-DIGIT TOWNSHIP NUMBER.

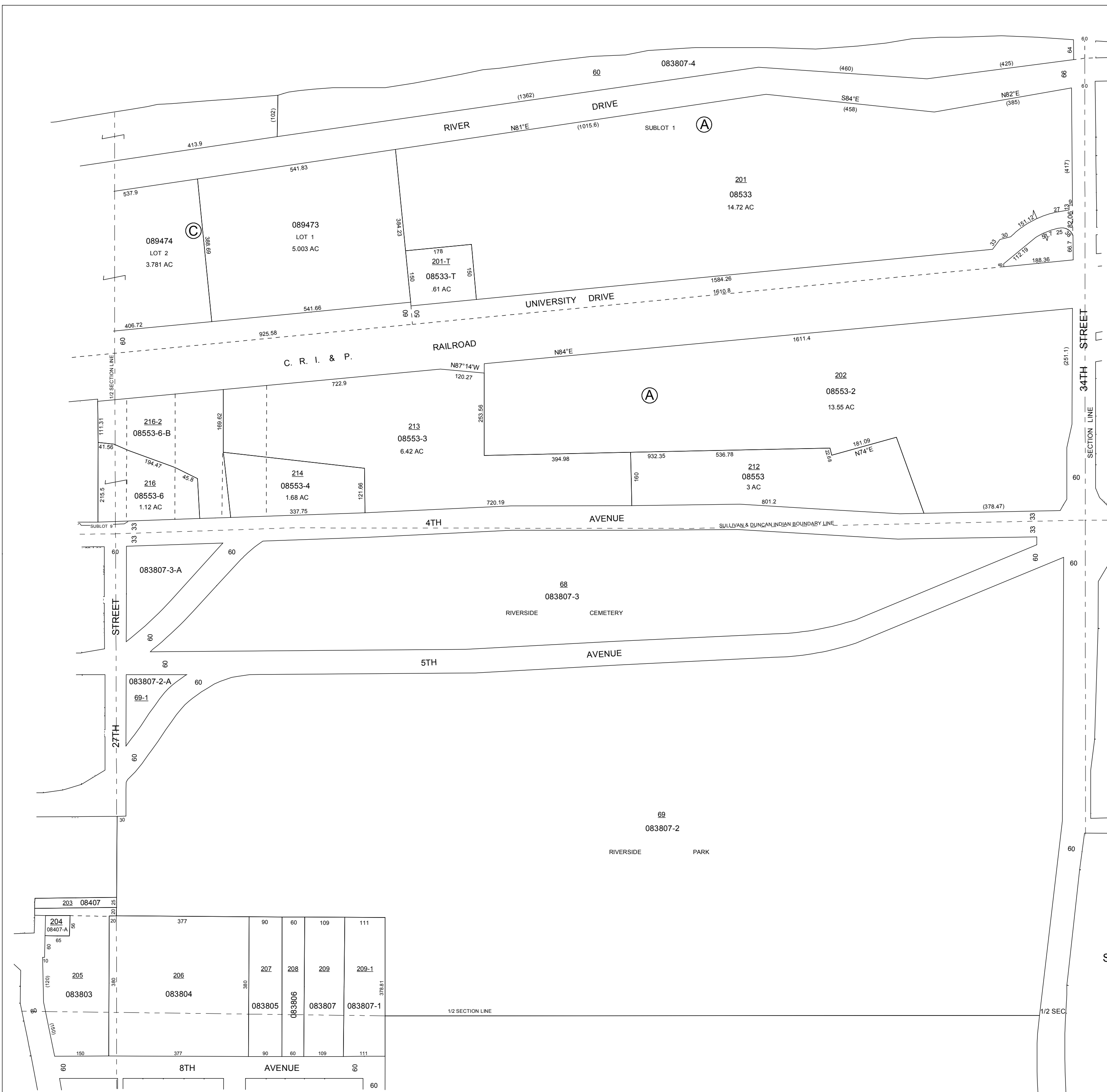


GIS DEPARTMENT
ROCK ISLAND COUNTY,
ILLINOIS

(A)
SUBLOTS IN LOT 3 LECLAIRE'S
RESERVE. 08522, 533, 553-2

(B)
TECHNOLOGY CORRIDOR 1ST
ADD. - FILED DEC. 29, 2004,
DOC. #2004-36995. 089407 - 9408

(C)
RIVERBEND COMMONS 1ST ADD.
FILED JAN. 17, 2014, DOC. #2014-
01118. 089473 - 9474



SUPERVISORS' ASSESSMENT
MAP OF
LOT 3 LECLAIRE'S RESERVE,
& FRAC. N.E. 1/4 SECTION 33
T.18N., R.1W. OF 4TH P.M.
MOLINE TOWNSHIP
SUPPLEMENTAL FOR 2015
08-33-200
THIS IS NOT A LEGAL DOCUMENT