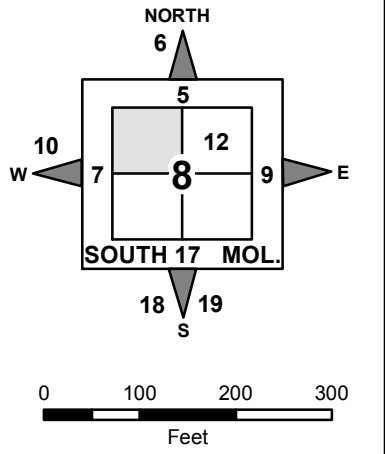
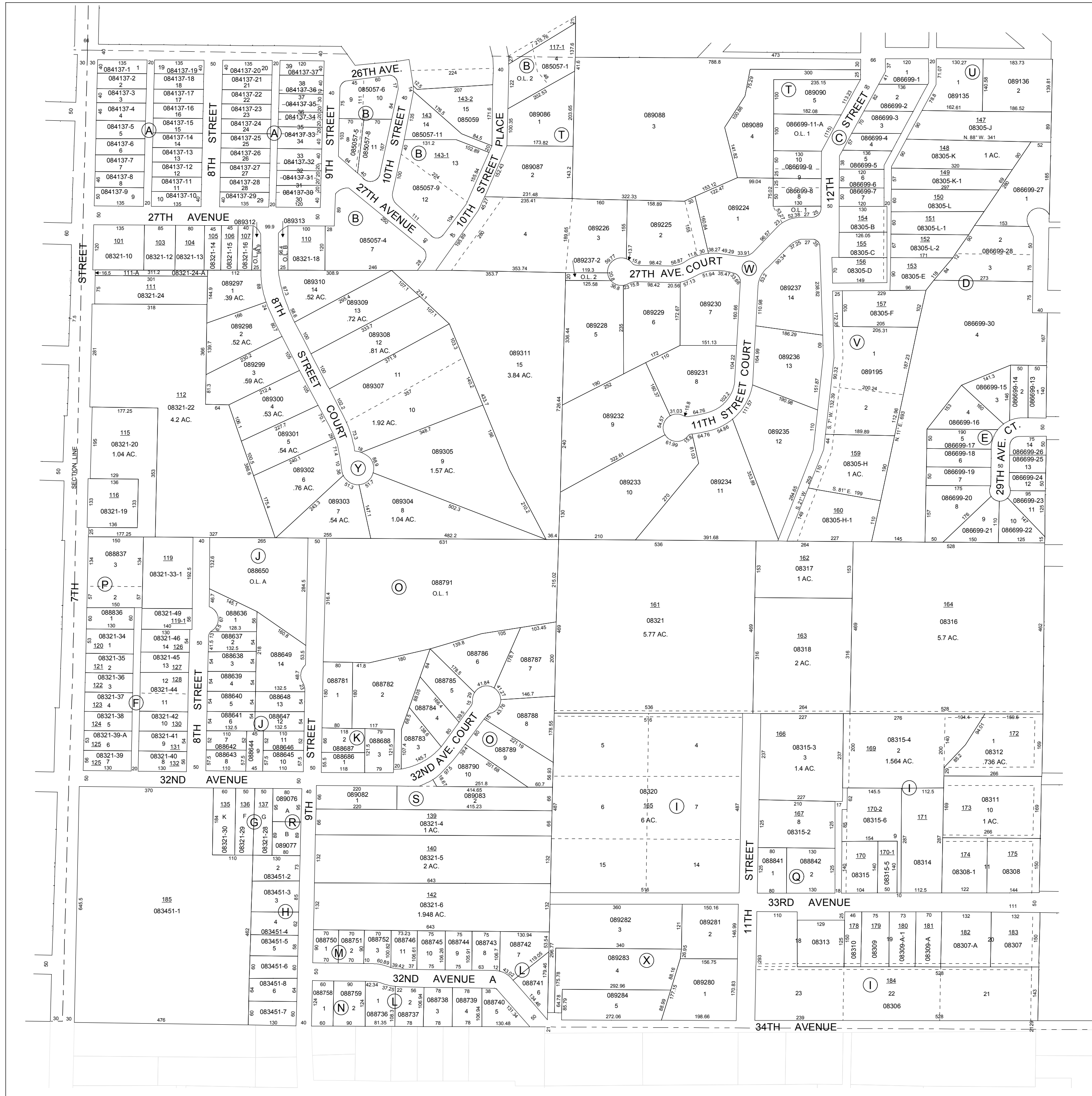


NOTE: STARTING IN 2002, PARCEL NUMBERS WILL NOT REFLECT THE TOWNSHIP ABBREVIATIONS, BUT THE 2-DIGIT TOWNSHIP NUMBER.



GIS DEPARTMENT
ROCK ISLAND COUNTY,
ILLINOIS

FOR SUBDIVISION
INFORMATION
SEE SHEET 11-S



SUPERVISORS' ASSESSMENT
MAP OF

N.W. 1/4 SECTION 8
T.17N., R.1W. OF 4TH P.M.

MOLINE TOWNSHIP
SUPPLEMENTAL FOR 2015

17-08-100
THIS IS NOT A LEGAL DOCUMENT