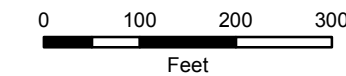
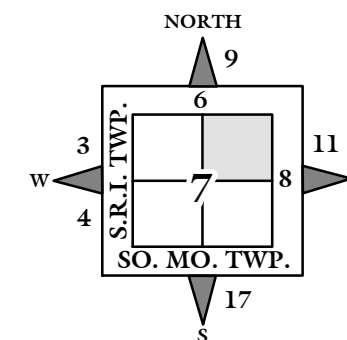
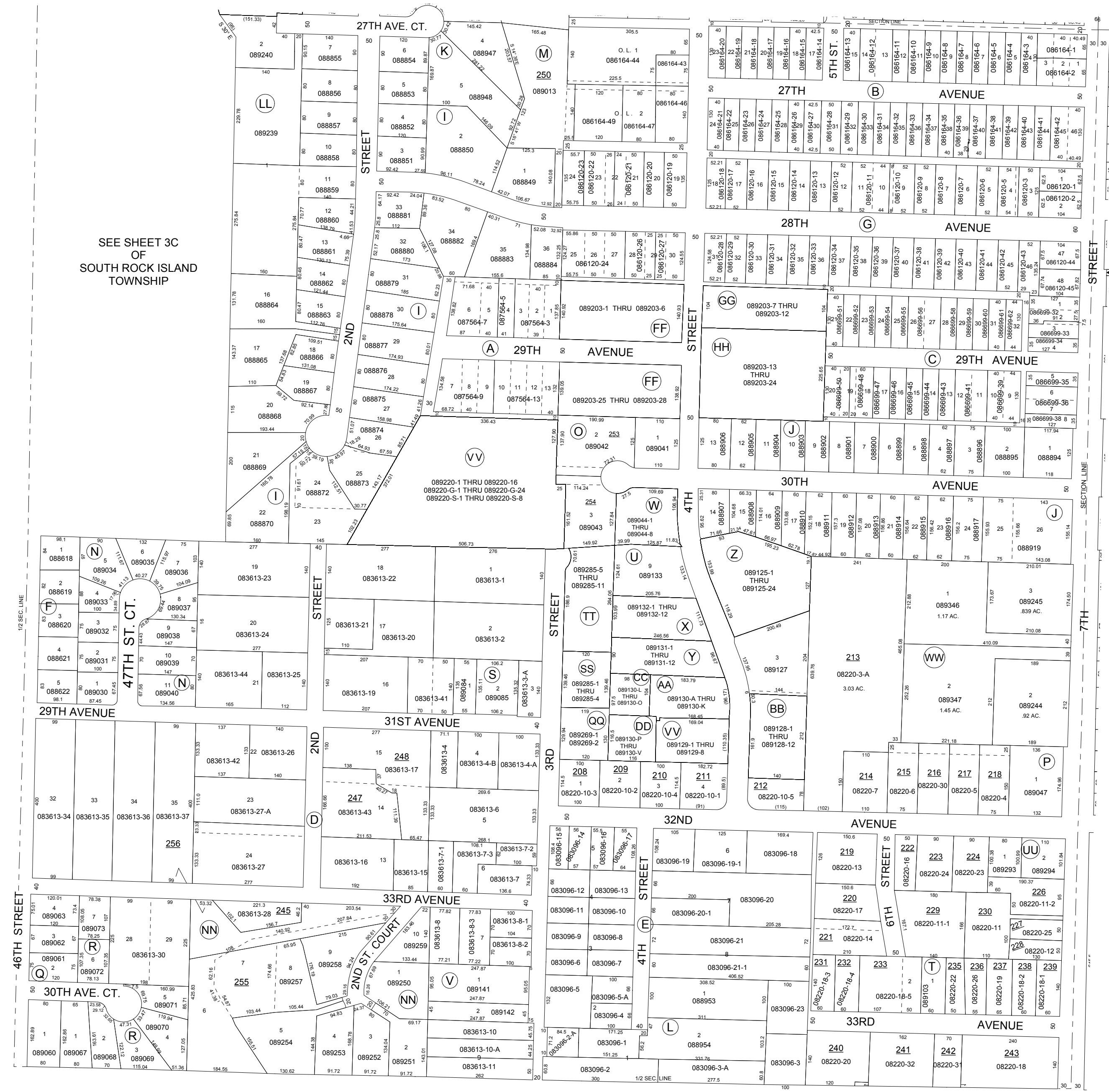


NOTE: STARTING IN 2002, PARCEL NUMBERS WILL NOT REFLECT THE TOWNSHIP ABBREVIATIONS, BUT THE 2-DIGIT TOWNSHIP NUMBER.



GIS DEPARTMENT
ROCK ISLAND COUNTY,
ILLINOIS

FOR SUBDIVISION
INFORMATION
SEE SHEET 10-S



SEE SHEET 3C
OF
SOUTH ROCK ISLAND
TOWNSHIP

SUPERVISORS' ASSESSMENT
MAP OF
N.E. 1/4 SECTION 7
T.17N., R.1W. OF 4TH P.M.
MOLINE TOWNSHIP
SUPPLEMENTAL FOR 2016
17-07-200

THIS IS NOT A LEGAL DOCUMENT